

marge

Text **Katya Tylevich**
Photos **Marge Arkitekter**



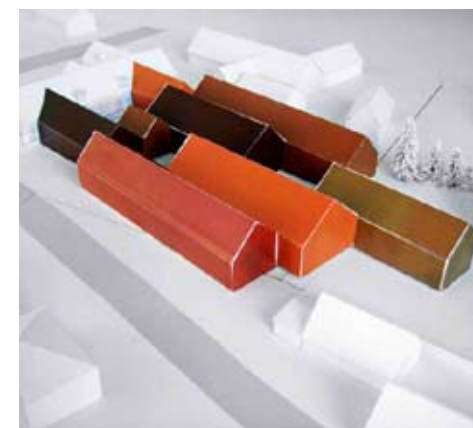
Stockholm's Marge Arkitekter recently faced the difficult task of giving a home for the elderly – a place that too often feels like a hospital – the warm atmosphere of a family residence. With this in mind, Marge approached a retrofitted 19th-century mansion in Skåne, Sweden, which was not meeting the practical and emotional needs of its residents, their caregivers and visitors. 'It's very important for people, some of whom may be quite ill, to recognize themselves – to move somewhere similar to where they came from,' says Susanne Ramel, one of Marge's four founders. She explains that in February 2009 residents of Norra Vram Nursing Home returned to a 2470-m² facility, including a 1450-m² extension, with spacious dining and gathering areas, an exhibition space, a library, and an entrance lobby with an espresso bar 'where you can have a good cup of coffee and feel like this is any

other place in the city. It's a stimulating space, with things happening and plenty of social interaction.'

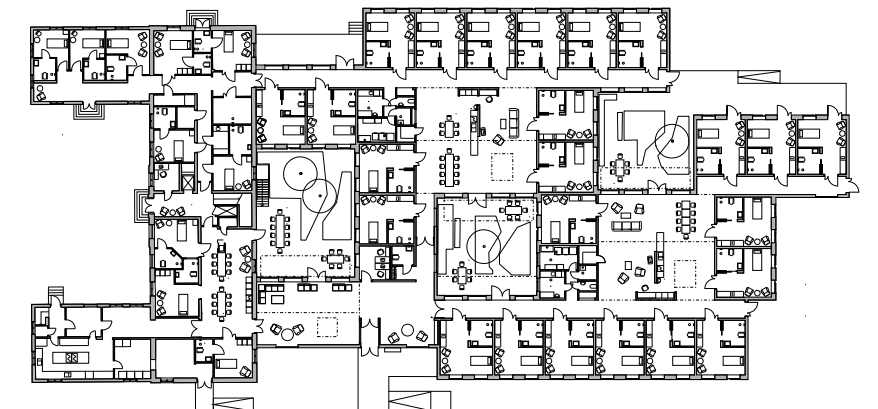
Norra Vram's red and orange façade evokes its precursor's brick walls. Low volumes and sloped roofs allude to old farmhouses found in southern Sweden, but its fluid interior spaces resound with present-day references. The design draws from modern offices, museums, cafés and, well, homes. Norra Vram's living units face social areas or courtyards. 'You look out to see *people*,' says Ramel, not corridors. Interior courtyards allow those with serious medical conditions to 'leave' the building safely. In its design, Norra Vram is sensitive to the immediacy and importance of daily bustle. Its welcome mat is a promise of vibrancy between walls.

www.marge.se

reboots an elderly home



MODEL



PLAN